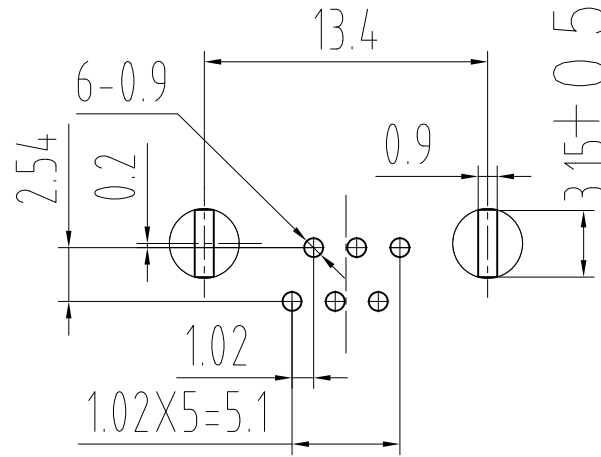
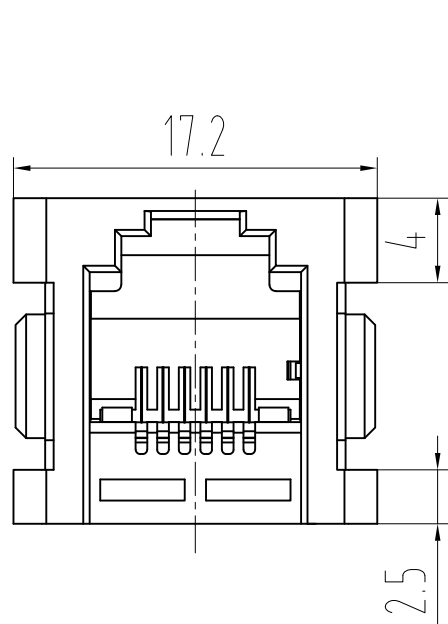
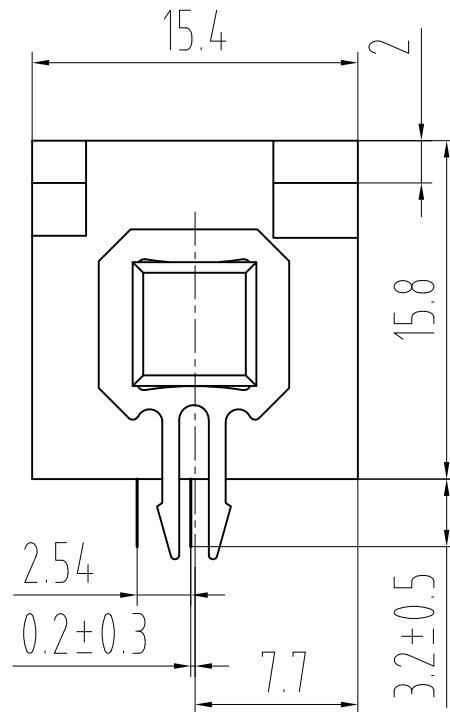
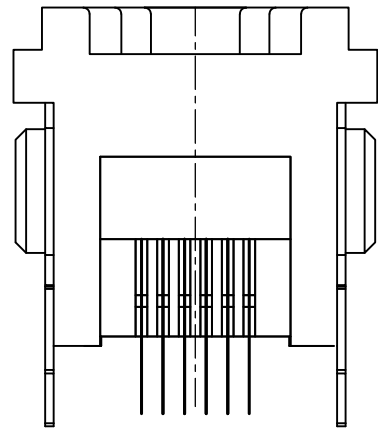


REVISION RECORD				
REV	ECO	DESCRIPTION	DRFT	CHKD



PC Board Layout  
Component Side Shown



NOTES:

MATERIAL:

- 1. HOUSING MATERIAL : GLASS FILLED POLYESTER UL94V-0.
- 2. CONTACT MATERIAL : PHOSPHOR BRONZE  $\phi$ 0.45mm.
- 3. PLATING : GOLD PLATING  $Fu$  "50u" OVER NICKEL.

ELECTRICAL:

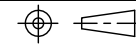
- 1. VOLTAGE RATING : 125 VAC RMS.
- 2. CURRENT RATING : 1.5 AMP.
- 3. CONTACT RESISTANCE : 30 MILLIOHMS MAX.
- 4. INSULATION RESISTANCE : 500 MEGOHMS MIN @ 500V DC .
- 5. DIELECTRIC WITHSTANDING RESISTANCE : 1000V AC RMS 50Hz. 1MIN.

MECHANICAL:

- 1. DURRABILITY : 750 CYCLES MIN.
- 2. PCB RETENTION PRE-SOLDER : 1 LB MIN.

ENVIRONMENTAL:

- 1. STORAGE : -40°C~+85°C
- 2. OPERATION : 0°C TO 70°C.

<small>DETAILED LISTS</small> <small>MM (INCH)</small> <small>TOLERANCES EXCEPT AS NOTED</small> MM .5 ± 0.25 ± .00 ± 0.15 ± .000 ± 0.05 ± ANGLES ± 0.5  <small>THIRD ANGLE PROJECTION</small>	DFTO	DATE	<h2 align="center">Coorle Technology</h2> <p align="center">TITLE 5225-6P6C-180° - 1x1</p>				
	CHKD	DATE					
	MFO	DATE					
	APPLV	DATE					
MATERIAL :	QTY :		DRAWING NO.		SIZE	REV	
FINISH :		/PART NO.		A3	0		
SCALE :		DO NOT SCALE DRAWING			SHEET X	OF Y	